

By Werner Pretorius

Engineering Manager – Stefanutti Stocks

Pr. Tech Eng - ESCA

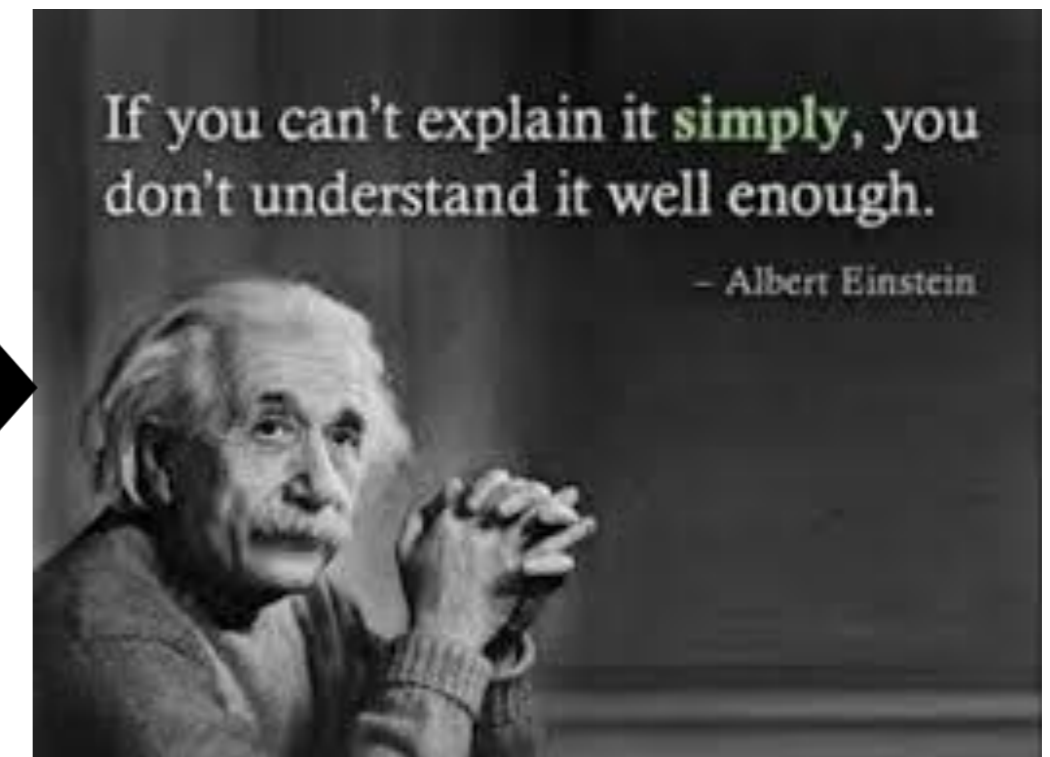
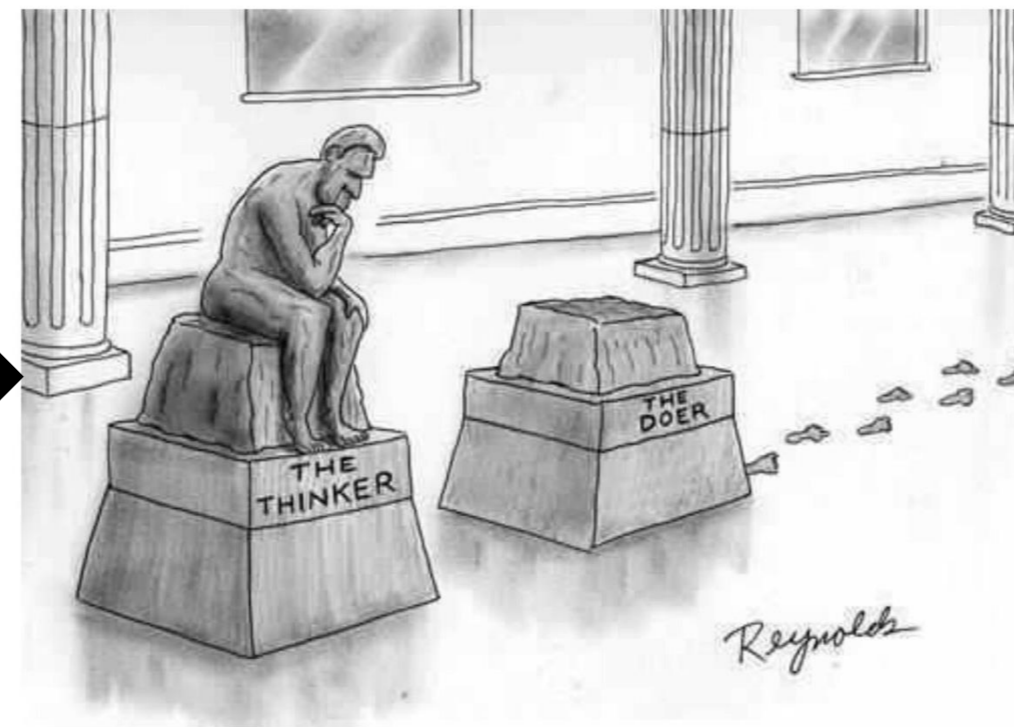
Pr. CM - SACPCMP

Masters in Global BIM Management (Candidate) - ZIGURAT

Fluent in construction, Engineering and BIM

Practical BIM Implementation

This presentation explores the **practical implementation** of BIM on projects from a contractor's perspective, with a focus on scenarios where BIM is either not required or applied in a simplified, lightweight form.



Typical Project BIM Requirements



Project Requirements

The contract requires:

- Coordinated,
- accurate, and
- discipline-integrated digital design outputs,
- Including drawings and as-built information.



But leaves the methods, tools, and data structures largely up to the project team.

Compared to ISO 19650

It lacks:

- Formal information management,
- Defined standards and roles,
- Common Data Environment (CDE) workflows,
- Structured data deliverables.

Placing it at a **low BIM** maturity level while **remaining compatible** with its principles.

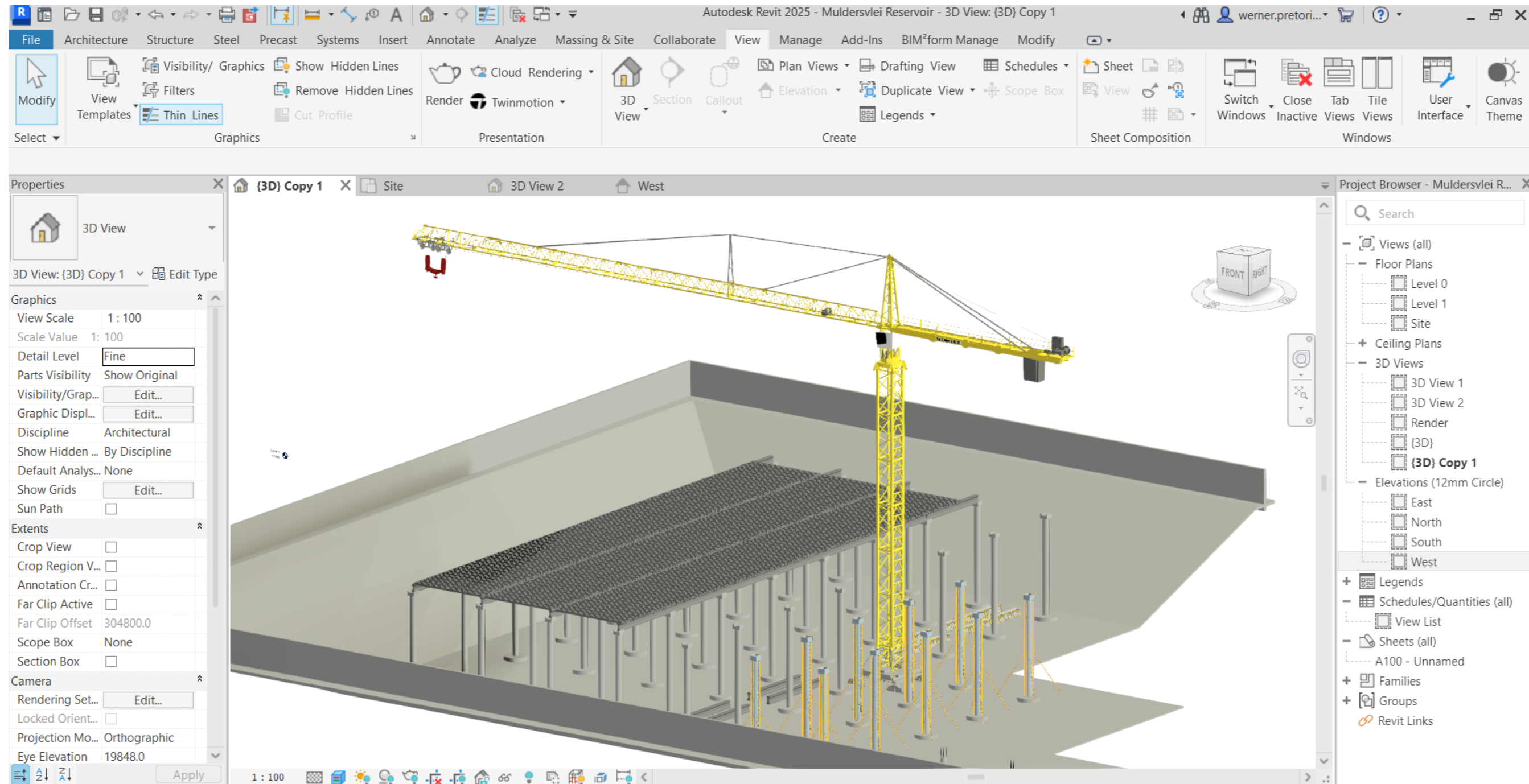
Alternative BIM Roadmap

Where there's a will, there's a way



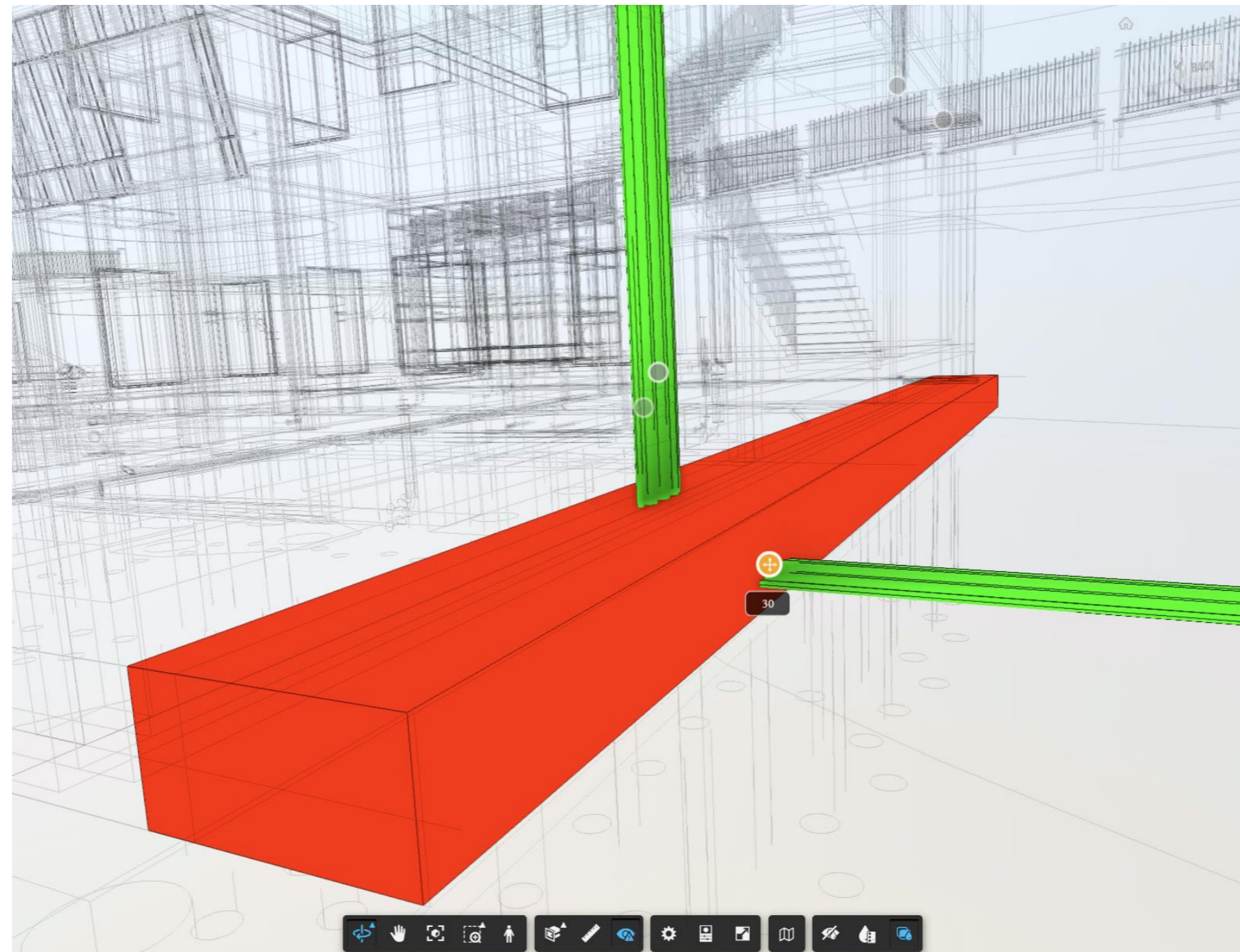
BIM Model

If it doesn't exist, built it – don't wait for it.



Clash Detection

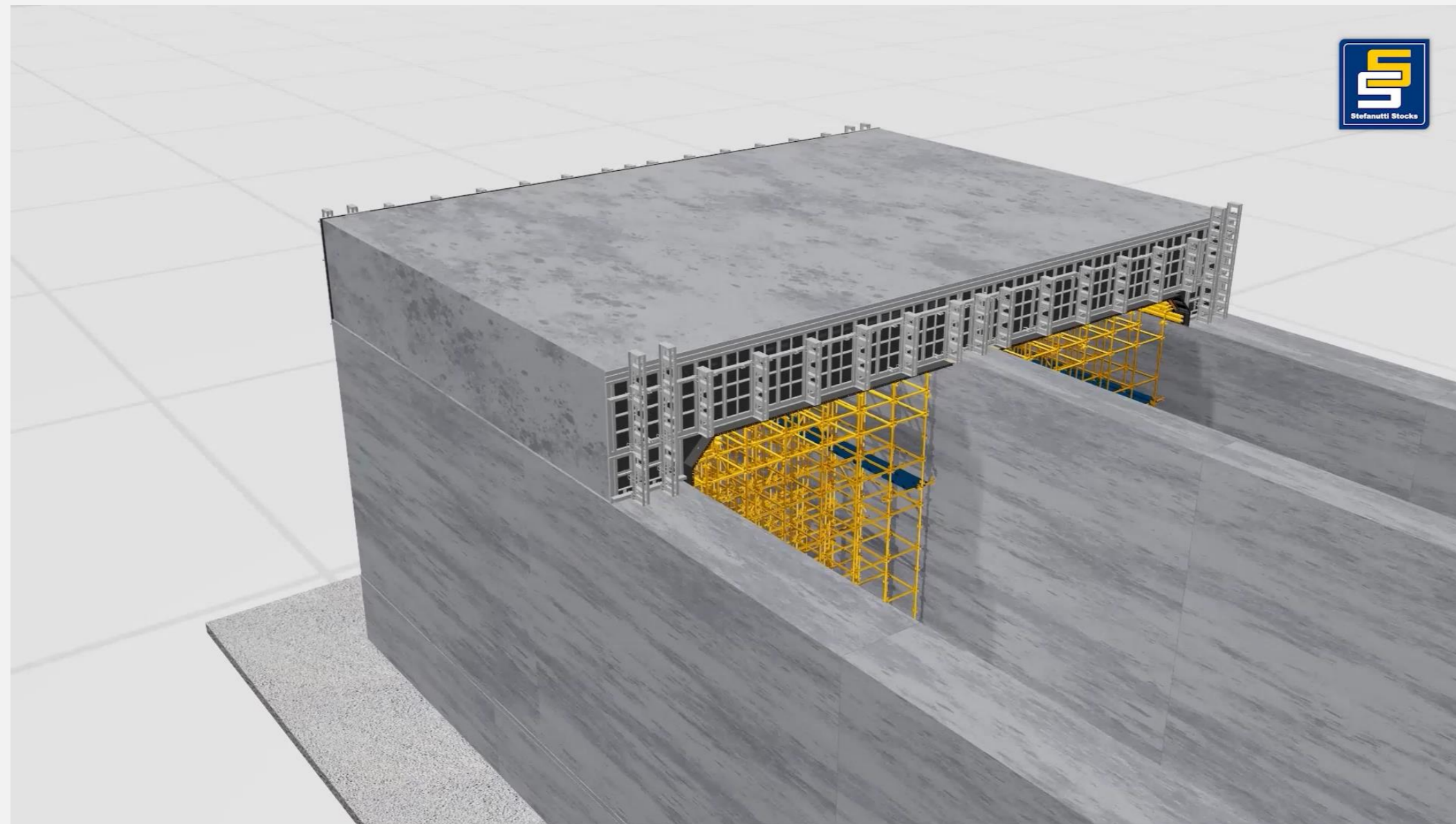
Clashes turn into claims—find them early or pay for them later.



4D Simulation and Animation

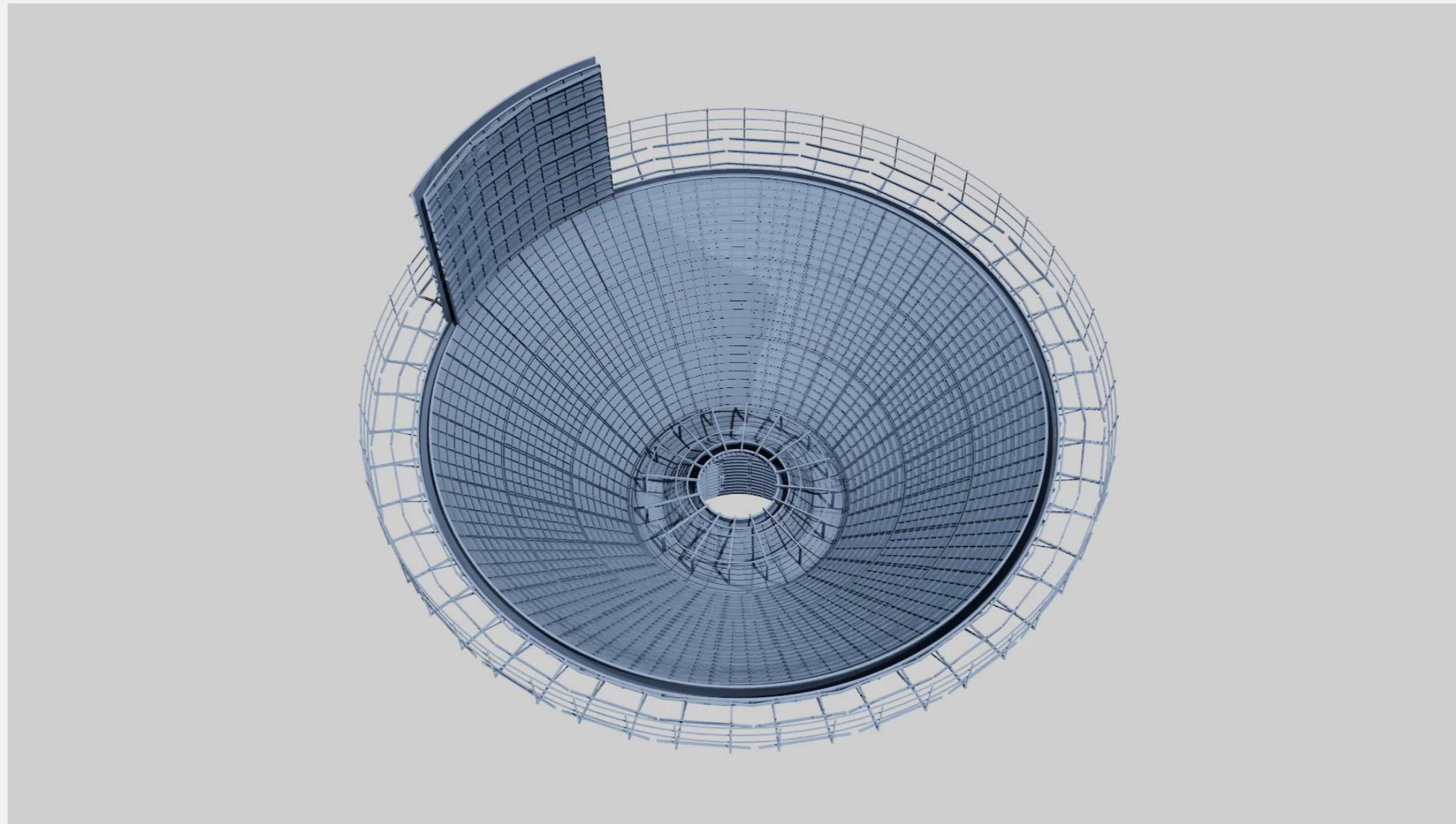


Make the programme visible so everyone understands the plan.



Temporary Works Design

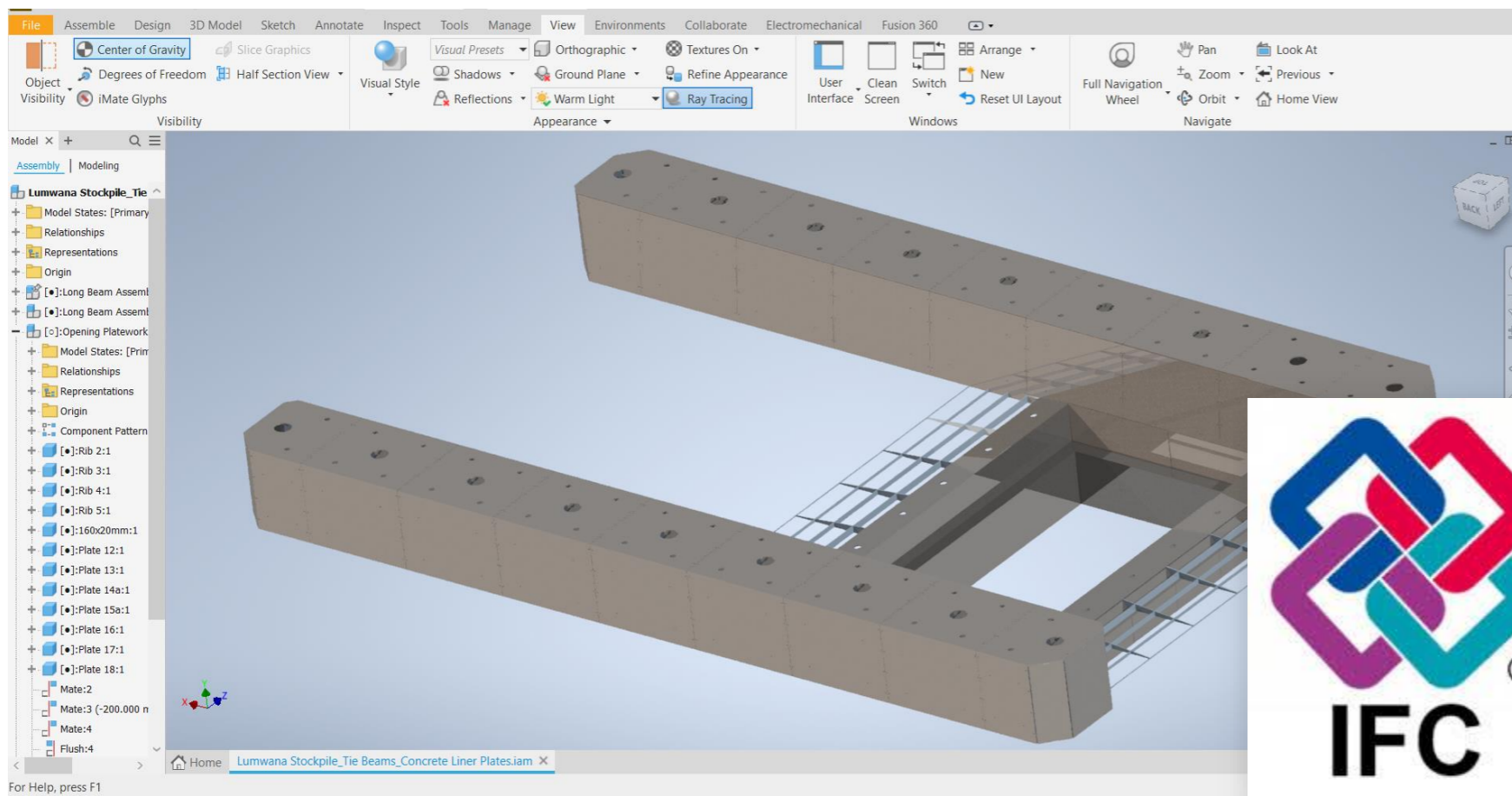
Own your discipline—don't just participate in it.



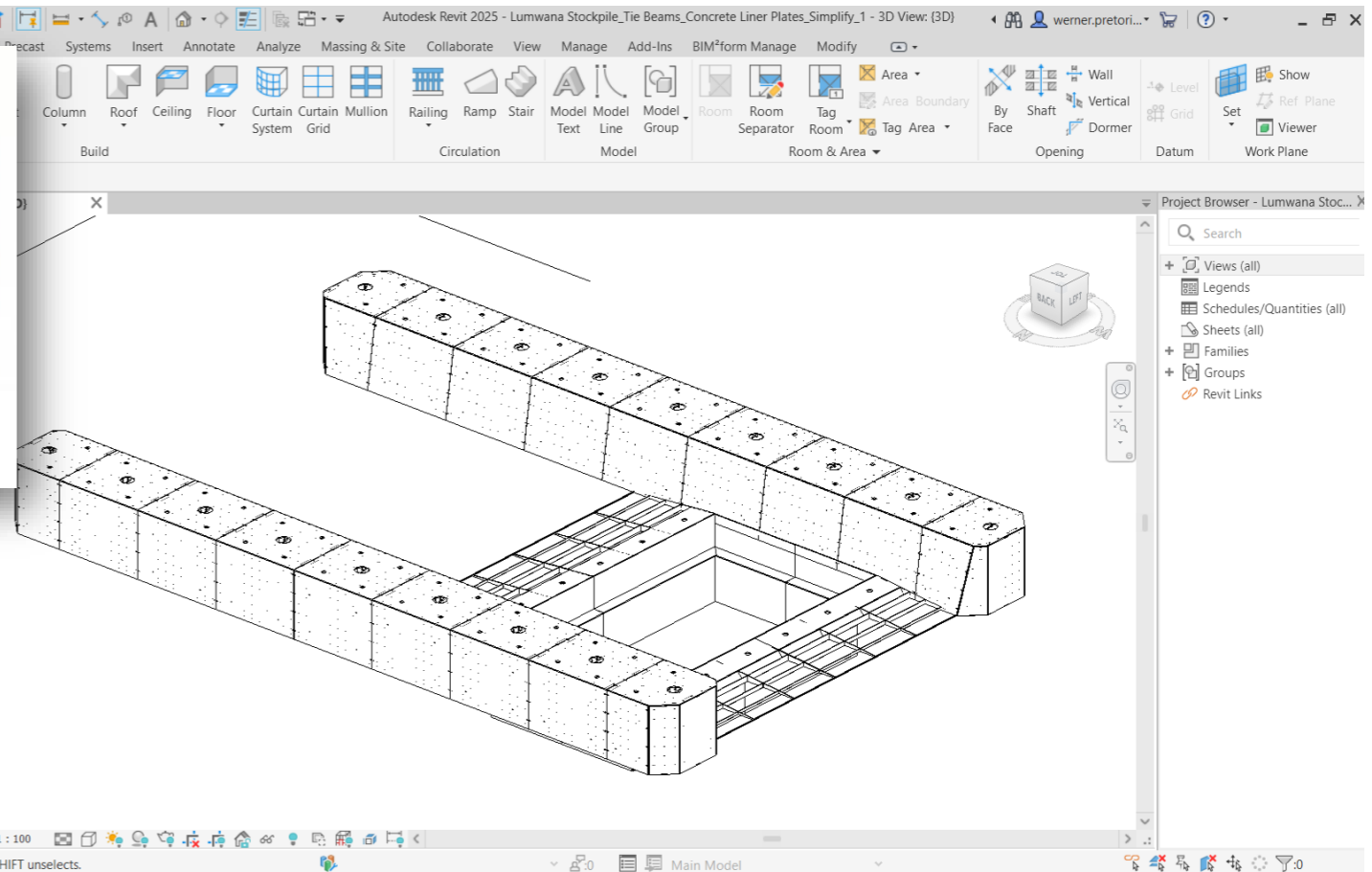
Fabrication Information



Be part of the solution by delivering information that can be built.



IFC For Asset Information

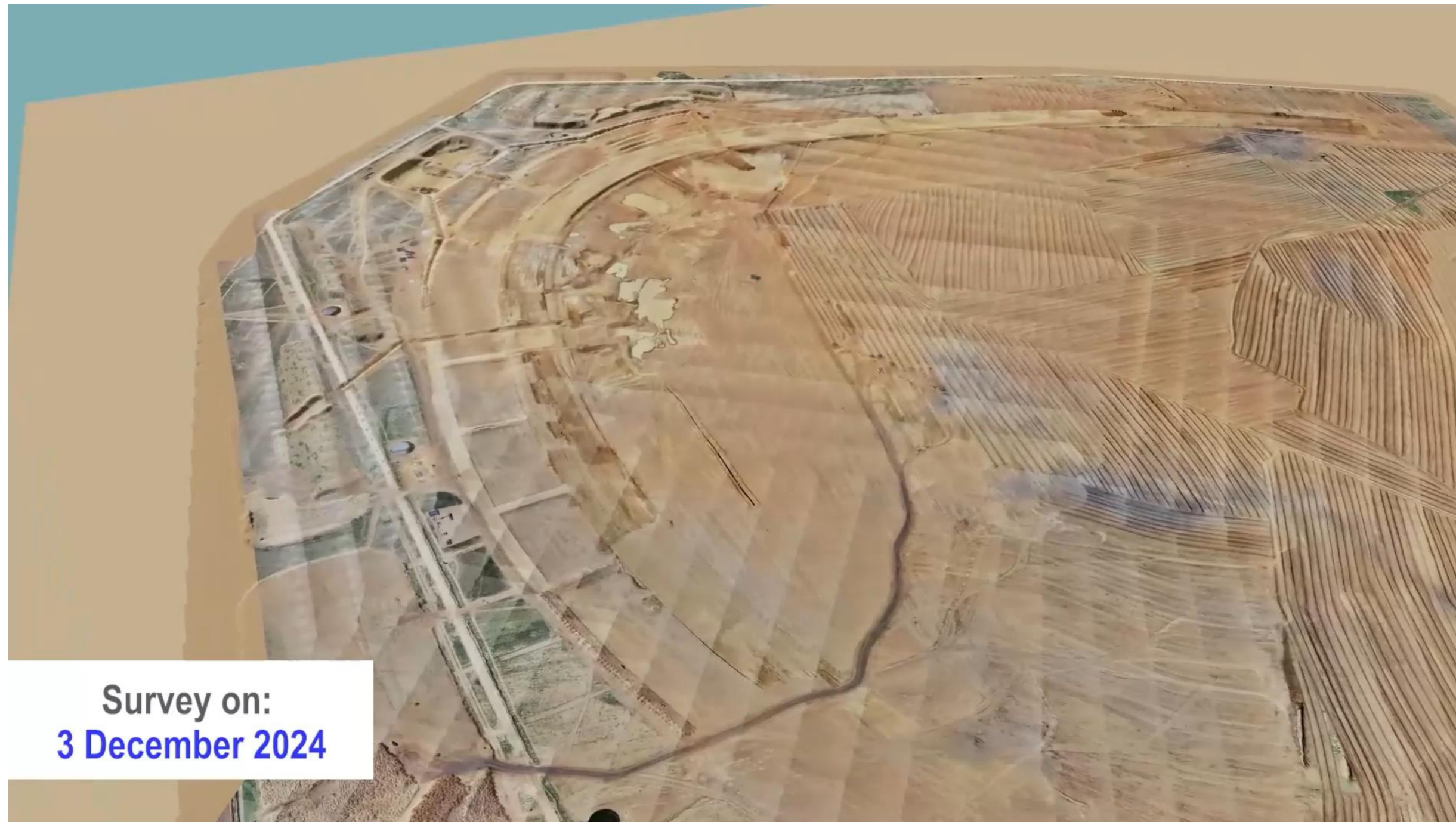


Fabrication Detailing

Project Update



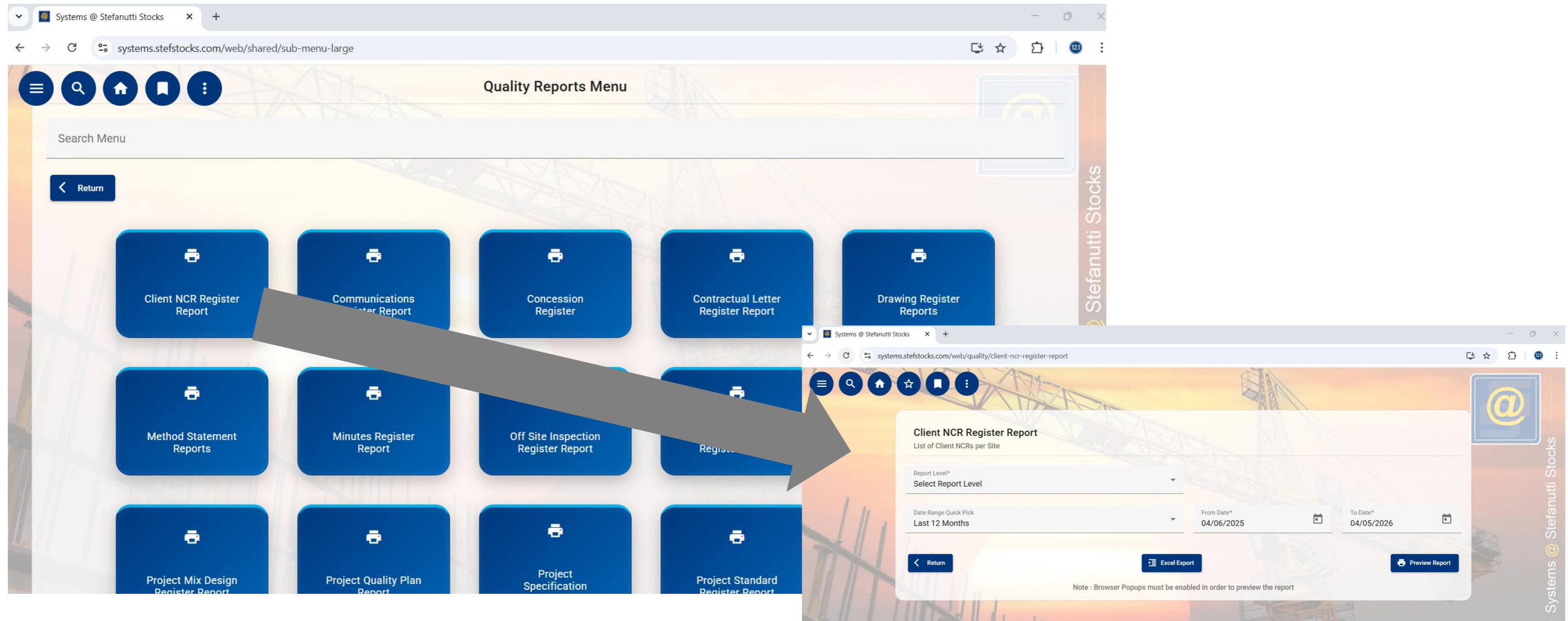
Pause, reassess, and move forward with intent.



Survey on:
3 December 2024

Electronic Data Management System

Stay relevant—this is how projects should run in 2026.



The image displays two overlapping screenshots of a web application interface. The top screenshot shows the 'Quality Reports Menu' with a search bar and a grid of report categories. A large grey arrow points from the 'Client NCR Register Report' button in the menu to the detailed report view in the bottom screenshot.

Quality Reports Menu

- Client NCR Register Report
- Communications Register Report
- Concession Register
- Contractual Letter Register Report
- Drawing Register Reports
- Method Statement Reports
- Minutes Register Report
- Off Site Inspection Register Report
- Project Mix Design Register Report
- Project Quality Plan Report
- Project Specification
- Project Standard Register Report

Client NCR Register Report

List of Client NCRs per Site

Report Level*
Select Report Level

Date Range Quick Pick
Last 12 Months

From Date* 04/06/2025

To Date* 04/05/2026

Buttons: Return, Excel Export, Preview Report

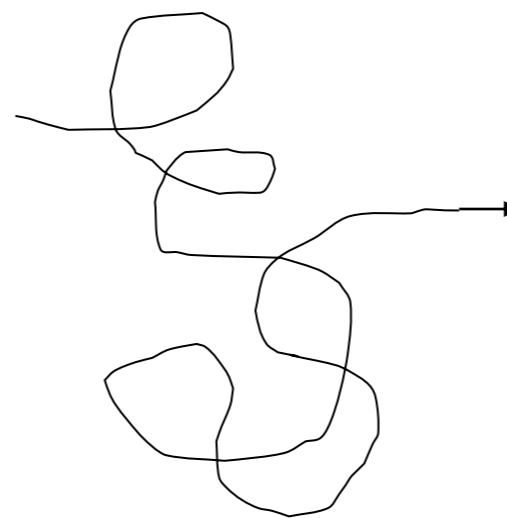
Note: Browser Popups must be enabled in order to preview the report

As-built

Capture what was actually built—because that's what matters in the end.



**“BIM won’t solve all your problems...
but not using it will definitely create a few.”**



Tower of Babel

Questions



Feel free to contact me.

